

# The Current

## KST Safety and Attendance Awards Picnic a Success

2010-2011 Safety Advisory Board Announced



2009-2010 Safety and Attendance Awards Picnic Company photo.

By Shane Harris

This past Saturday marked KST's third year in hosting our annual Safety and Attendance Awards Picnic. For the 2009-2010 safety year, we

had 230 qualifiers for safety jackets and 133 qualifiers for attendance jackets. We had a total number of 898,000 safe working hours this year, totaling \$26,940.00, which was spent to purchase prizes that were given away. With a turnout of over 300 people, KST was well represented from all over the state. Employees from Manor, Dallas, Corpus Christi, Houston, and San Antonio (who took home the most prizes) were in attendance. The safety board would like to congratulate everyone for their motivation and commitment to working safely. It is because of our employees' willingness and commitment to

*Story Continues on Page 7, see Safety Awards*

### IN THIS ISSUE

- Safety and Attendance Awards Picnic..... 1
- Bada - "BIM" .....2
- Project Spotlight: UT Biomed Bldg.....3
- Celebrations/Employee News .....4 & 5
- Project Spotlight: People Fund Center.....6



(Above) Directors James Kuykendall and Justin Tumlinson suit up to serve dinner to employees and their families.

(Above) KST Employee Sonya Hefner was the only female to enter the finals in the Horseshoe Tournament. She partnered with her father-in-law, almost taking home the title.



(Above) Employee Cade Harris was the recipient of the KST Scholarship this year. Cade is a sophomore at Texas A&M University, majoring in Recreational Parks and Tourism Technology.



# Bada – “BIM”

By Dave Terwilleger

What the heck is “BIM”? It seems from out of nowhere this “BIM” thing has now become an industry standard on nearly all of our new and some of our remodel construction jobs.

## So... what is “BIM”?

BIM is an acronym for **B**uilding **I**nformation **M**odeling. The Building Information Modeling term was coined by a Professor Charles Eastman back in a 1970’s book he wrote referencing an architectural design process he envisioned. Since then other people, including Architect Phil Bernstein who nicknamed the concept “BIM”, and Architect Jerry Laiserin both have promoted the “BIM” concept throughout.

## So what does Building Information Modeling mean?

I am sure that you have heard the old adage... “A picture is worth a thousand words”. “BIM” has taken this “picture” concept and made it worth millions of words by using software that creates virtual 3D models embedded with data. These models are shared by design teams or MEP contractors in an effort to identify design problems early on to ensure a more efficient construction process. “BIM” is an expansion from our normal “2D” construction plans (blueprints) to modeled drawings that are detailed 3 dimensionally as well as adding time and sequencing (considered the 4<sup>th</sup> dimension) and information including cost, submittal info and resources (considered the 5<sup>th</sup> dimension). These “BIM” models enable the Architects, Engineers, the Owners, and the Contractors to “visualize” the project in ways that we couldn’t do in the past. The amount of detail that can be added to these “BIM” models allows everyone the ability to “look into” the building and correct, change, or enhance the design.

On a true 100% “BIM” job the customer ends up with a 3D virtual model of their project (probably in Revit) that has everything concerning that job embedded or linked to the “BIM” model. The customer could open the job file on a computer and “click” on any component of that model to retrieve detailed information that is available by linked files. Submittal information, Spec information, cost of fabrication, materials, manufacturer info, etc. would all be available with a click of the mouse. This “BIM” model would act as an O&M (Operations & Maintenance) manual as well and would also be useful for future building expansions and remodel work.

To date we (KST) have not had the opportunity to do a “complete” BIM project. Rosendin has also never worked on a complete 100% BIM project. Most jobs that we deal with that are supposed to be “BIM” projects are only referring to the modeling and coordination process that is part of “BIM”. The coordination of drawings using individual designs and MEP models is probably the most desirable function of “BIM” right now, but in the future all jobs will use all of the available features of a true “BIM” designed project.

## You may wonder...”Why is it happening now”? Or “Why is everything changing so fast”?

The answers to those questions consist of a number of factors involving many different but somewhat related areas of the construction industry. For example:

- We have exotic software that enables us to build, view, change, and enhance the basic designs required by Architects/Engineers
- We have computers (desktop and PCs) with enough memory and processor power to run these sophisticated software programs needed to design these “BIM” models
- The shift in design responsibility from the Architects/ Engineers to the MEP contractors has promoted this “BIM” process (contractor’s are being pressured to complete the design due to time and money constraints)

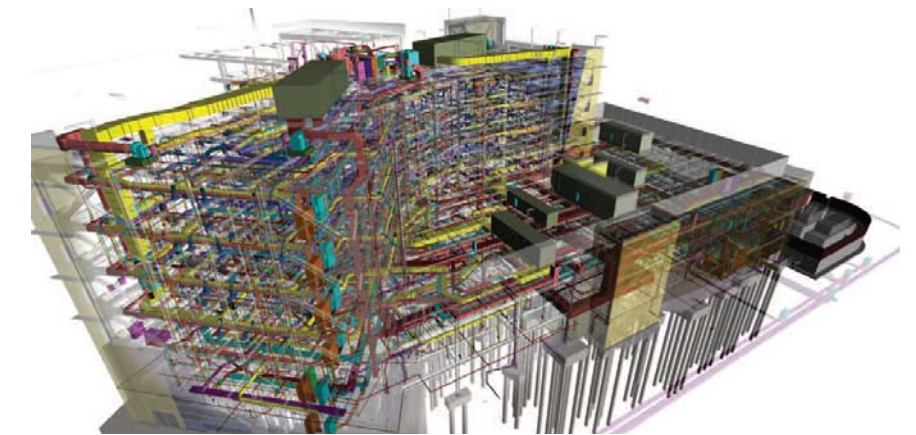
# “BIM”

*Continued From Page 2*

- And probably the most important aspects of the BIM process are:
  - a) BIM reduces overall construction cost to the customer because of the flexibility for design change
  - b) BIM facilitates a complete 100% design that is MEP coordinated
  - c) the “BIM” process utilizes modeling that enables the customer and designer to visualize what the completed project will look like prior to construction
- I believe that the natural progression of new ideas migrates slower through the Southern part of the country as compared to other more progressive areas. In other words, it takes us longer to embrace new methods and ideas than it does in other areas.

All in all, the “BIM” process is here to stay. It will continue to evolve and mature as the capabilities of the individuals involved in the design process refine and expand their talents. There is no magic button that we can push to create the “BIM” models, but it may be that simple in the future. We may even be able to project a full scale working model that we can “physically” walk through to see how everything works.

The future is here for now and who knows what tomorrow will be with respect to the construction world.



Example of a BIM model

## Safety Awards and Advisory Board

*Continued From Page 1*

to safety that we have so many safe working hours, thus enabling KST to purchase the fabulous prizes that were given away at the picnic.



The Safety Advisory Board plays a key role in ensuring our job sites and campuses are safe working environments for our employees. Now that we have begun our 2010-2011 safety and attendance year, we would like to announce the new members of this board. The 2010-2011 Safety Advisory Board members are: John Sunvison, President; Shane Harris, Secretary/Treasurer; James Doyle, Foreman; Bruce Prellop, Foreman; Louis Frazor, Foreman; Brian Pogue, Foreman; Tony Rinn, Foreman; Donovan Selvera, Foreman; Jeremy Miles, Project Manager; Shane Gutierrez, Project Manager; Darryl Petrosky, Project Manager; Richard Hinkle, SAP/Coordinator; Justin Tumlinson, Owner/Representative.

Remember, any time you see these men at the office or on a job site, you can inform them of any safety concerns or issues you may have. They can then present these concerns or issues to the rest of the advisory committee. You can also attend any of the monthly Safety Advisory Board meetings held at the Manor office. Congratulations on a great safety and attendance year KST, let’s keep it up!

*Turn to Page 8 to see some shots from the picnic!*

# Project Spotlight:

## PeopleFund Center for Economic Opportunity

KST Electric, LTD and Braun and Butler Construction have teamed up to provide the first of several buildings that are to be built on the property located at Martin Luther King Boulevard and Alexander Avenue in Austin. The Project is known as the “PeopleFund Center for Economic Opportunity”. Although the PeopleFund project, when initially started, hit many obstacles that caused delays in the project, Colin Juren (Project Manager) and Landy Smith (Site Superintendent) with Braun and Butler Construction together with KST Electric have worked tremendously together to ensure the deadline for completion is met. KST’s foreman, Mike Arnold, is working as a foreman on this project and has provided excellent work in a timely manner to ensure the electrical work provided meets KST’s standards of excellence. KST Electric, LTD is also providing, through a subcontract of Koetter Fire Protection, all Fire Alarm requirements in accordance with the contract documents.

This project consist of a two story building with several work stations located throughout the first floor of the building for small business owners to access information used to benefit their small business growth. The first and second floors also provide a “Reception” Room, “Community Meeting Room” and a “Community Workshop” to be used by small business owners. The second floor also provides a “Work Room/Entrepreneurial” Room and a “Lobby/Gallery”.

The PeopleFund project was started in November 2009 and is expected to be completed at the end of July 2010. As stated in the Austin Business Journal on July 20, 2008, PeopleFund is a Non Profit Organization that has helped many Central Texas businesses grow, and is expanding its programs for underserved and low-income people.

PeopleFund is also seeking, through the construction of this project, a Silver Certification with the Leadership in Energy and Environmental Design (LEED) Green Building Rating System. What this means to contractors is that specific requirements have to be met for all installed material to be considered “Green”. More information about the PeopleFund project can be found on the PeopleFund Website.

If you would like to order clothing or apparel from our company store, please see the following for store hours and ordering information:



**Company Store hours: Wednesday only, 12 pm- 4 pm**

Order forms must be received by Noon on Wednesdays to receive your order on the same day. If received after Noon on Wednesday, your order will be ready the following Wednesday.

If you come into the office to purchase, please see Melinda Hull.

# Project Spotlight:

## UT Biomedical Engineering Building – South Expansion

Vaughn Construction Company, Inc. and KST Electric, Ltd. teamed up at the University of Texas at Austin for the South Expansion of the Biomedical Engineering Building. The 38,610 square feet expansion includes six new stories, a telecommunication underground ductbank, and additional work modifying the existing Biomedical Engineering Building. The initial contract had one floor of the new expansion being built out 100%. To date, an additional three floors have been finished out, consisting of six additional labs and several offices.

The coordination from Vaughn Construction and Dynamic Systems, Inc. (mechanical contractors) has been very beneficial for this project. The task of coordinating and completing work in an existing occupied building is a difficult task by itself. However, the existing Biomedical Engineering Building had several labs and cold rooms that could not be turned off due to experiments and cultures that were in progress. Coordinating power outages to complete the new power distribution design, without interrupting existing power conditions, was a tough task. Months of planning, researching, and coordination between KST Electric and Vaughn Construction led to a successful transition for the addition of the new distribution system.



Currently, the South Expansion is on track to be completed in December of 2010. KST Electric would like to recognize the outstanding efforts put forth by Jose Villarreal, Erik Eubank, Doug Boram, and Rick Langely of Vaughn Construction. Without their help, the coordinating and completion of the new addition could have been troublesome. KST Electric would also like to thank Shane Terry (KST Foreman), Jesse Navejas (KST Preplanner), and Dillon Doyle (KST Prefabrication Manager) for their outstanding efforts put forth for this project.



# Happy Birthday to...

## July

Jose Arevalo 1  
 Jeremiah Elizondo 1  
 Marcus Galvan 1  
 Rex Stockton 2  
 Guadalupe Esparza 2  
 Matthew Briggs 2  
 Juan Rodriguez 3  
 Tracy Orme 4  
 Travis Edlin 5  
 Walter Chaney 6  
 Jeff Ricciardi 6  
 Aubray Rivera 6  
 Mark Lawhon 7  
 Vickie Dillard 8  
 William White 8  
 Ernest Holmes 10  
 Tomas Aleman 12  
 Rorey Voigt 12  
 William Crump 13  
 Donavon Woolley 13  
 Antonio Almodovar 14  
 James Surre 15  
 Lance Suchomel 16  
 Larry Bonham 17  
 Steven Cook 19  
 Gabriel Lujan 19  
 Derek Meyer 20  
 Elizabeth Brink 20  
 Richard Sanchez 20  
 Bulmaro Castillo 20  
 Dustin Doyle 21  
 Dillon Doyle 21  
 Farron Matthews 23  
 Robert Ramirez 23  
 Jamaer Hopes 23  
 John Mortellaro 24  
 Santana Leos 26  
 Shirley Pruitt 27  
 William Gotchey 29  
 Robert Balandran 29  
 Kristen Fiebig 30  
 James Stone 31  
 Fletcher Thorne 31

## August

Joshua Lasater 1  
 Jeffrey Pruitt 3  
 Hub Hunt 4  
 Miguel Ramirez 6  
 Cory Amidon 7  
 Ricardo Alvarado 7  
 Jeremy Whitaker 7  
 Ismael Gonzalez 8  
 Sonya Hefner 8  
 Raymond Statton 8  
 Juvenal Campos 9  
 David Barker 9  
 Luis Adame 10  
 Roberto Romero 11  
 Fernando Martinez 11  
 Ronnie Flores 11  
 Tabetha Leavines 12  
 Paul Soliz 13  
 Russell Horn 13  
 Ramon Thompson 14  
 Ruben Hernandez 14  
 Joseph Selvera 15  
 Frank Darter 16  
 Elmore Willis 16  
 Ruben Trevino 19  
 Albert Gutierrez 20  
 Kevin Holder 20  
 Scott Cancellieri 21  
 Gerald McKee 22  
 Justin Maxwell 22  
 Todd Naiser 23  
 Steven Hoffman 24  
 Robert Rodriguez 25  
 James Reese 25  
 Michael Nelson 26  
 Dean Bryant 27  
 Clifford Roberson 27  
 Detrick Watts 28  
 Steven Hanson 28  
 Raymond Mireles 28  
 Jonathan Kelly 29  
 Scott Witt 31

## September

Bobby Swenson 1  
 Roger Larson 1  
 Tim Schultz 1  
 Sean Witt 4  
 Lorenzo Torrez 5  
 John Sunvison 7  
 John Taylor 9  
 Michael Warden 9  
 Leticia Tornquist 9  
 Jeffrey Johansen 9  
 Chas West 10  
 Edward Cano 10  
 Lee Gonzales 10  
 John Lynch 10  
 Brandi Watson 11  
 Robert Sanchez 11  
 Martin Soto 11  
 Daniel Ranjel 12  
 Charles Cole 12  
 Erik Carroll 13  
 Chris Hernandez 14  
 Kevin Telander 15  
 Rolfe Patterson 16  
 Terry Tindall 16  
 Edward Ortiz 16  
 Daryl Petrosky 16  
 Juan Robledo 16  
 Joe Parsons 17  
 Glen DeFillipi 18  
 Christopher Piersol 18  
 Alejandro Miranda 18  
 Mike Starkweather 19  
 Jeremiah Crabtree 19  
 Elise Franki 19  
 Douglas Schneider 20  
 Donald Murphy 20  
 Jim Rodriguez 20  
 Robert John 23  
 Alex Lecchini 25  
 Anthony Rinn 25  
 Brian Pogue 25  
 Shannon Alexander 26  
 Melvin Freitag 27  
 Kenny King 27  
 Perri Knopp 30  
 Shane Harris 30

## KST Travels

Check out a few recent trips taken by our KST employees.



(L-R): Kristen Fiebig, Glenn Garrett, Suanna Tumlinson, Ron Churchman, and Brandi Watson recently spent a few days in California for Management Training with Rosendin - but not before stopping at the Santa Clara Boardwalk!



(Above): KST partnered with State Farm Insurance to provide disaster relief to the Harlingen and Brownsville areas of Texas during Hurricane Alex. Our KST convoy left early July 1<sup>st</sup> to carry equipment to the sites they provided relief at.



(L-R: Peter Bixby, Ron Young, Henry Patterson, and Israel Valdez.) KST Foreman Peter Bixby, who is working on the DADS project in El Paso, recently took some time to see the sites with fellow KST employees. The guys rode the Wyler Aerial Tramway at Franklin Mountains State Park up to Ranger Peak. From this point, they could see three states: Texas, New Mexico, and Chihuahua. They could also see two countries: the United States and Mexico. The city of El Paso can be seen in the background behind them.

## Congratulations!!



Congratulations to Robert and Jill Rybarski on the birth of their new baby girl! Peyton Elise Rybarski was born Friday, June 4<sup>th</sup>, 2010. She weighed 7 lbs. 4 oz. and was 19 ½ inches long. Robert is a KST foreman currently working on the LaGrange Power Plant.